

# Musical Modes

Learn About Modes in Music

*Compose unique melodies*



*Sheetmusic with Letters*

BY THOMAS DE HAAN

©EasyPianoSheets

# The Musical Modes

## Introduction

**Modes** in music refer to different scales that have been used in history to create melodies and harmonies. Each mode has a distinct pattern of intervals between its notes, which gives it a unique sound and mood.

The most common modes used in Western music are the **Ionian, Dorian, Phrygian, Lydian, Mixolydian, Aeolian, and Locrian** modes.

These modes are derived from the major scale and each has its own characteristic pattern of whole and half steps, resulting in different tonalities and flavors.

## The Seven Types of Modes

**Ionian mode:** This is essentially the major scale, with a bright and uplifting sound commonly associated with happiness and joy.

**Dorian mode:** It has a minor tonality with a raised sixth degree compared to the natural minor scale, creating a melancholic yet hopeful quality.

**Phrygian mode:** With a flattened second degree, this mode has a dark and exotic sound often associated with tension and mystery.

**Lydian mode:** It features a raised fourth degree compared to the major scale, giving it a dreamy and ethereal quality.

**Mixolydian mode:** It has a major tonality with a flattened seventh degree, resulting in a bright and upbeat sound often used in folk and rock music.

**Aeolian mode:** This is essentially the natural minor scale, with a somber and introspective sound commonly associated with sadness and introspection.

**Locrian mode:** It is the darkest and most dissonant of the modes, with a flattened second and fifth degree, often used for creating tension and instability. Locrian mode is not used often because it lacks a perfect 5th which is the foundation of popular music.

## History

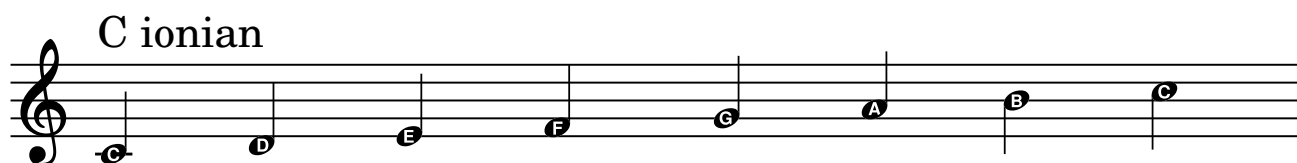
The seven musical modes date back to ancient Greece, where they were derived from different scales used in Greek music theory. These modes were later adopted and expanded in medieval Western music, particularly in Gregorian chant, where they became essential in church music.

# Modes in C Major Scale

## Ionian Mode

The Ionian mode is the 1st mode of the natural major scale

This mode can be found in most classical & modern music

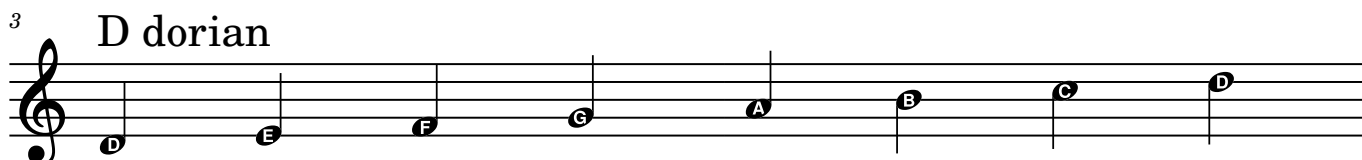


## Dorian Mode

The dorian scale is a minor scale with a raised 6th.

Songs using the Dorian Scale:

Scarborough Fair (Simon & Garfunkle)

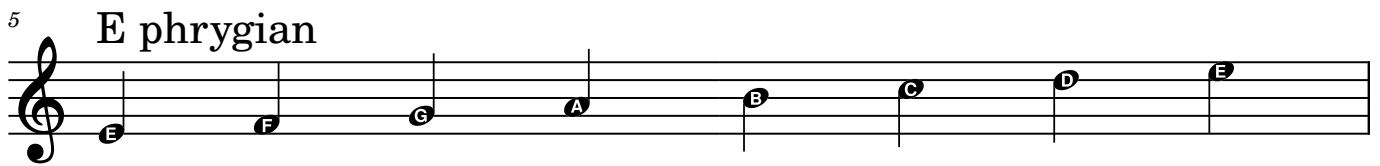
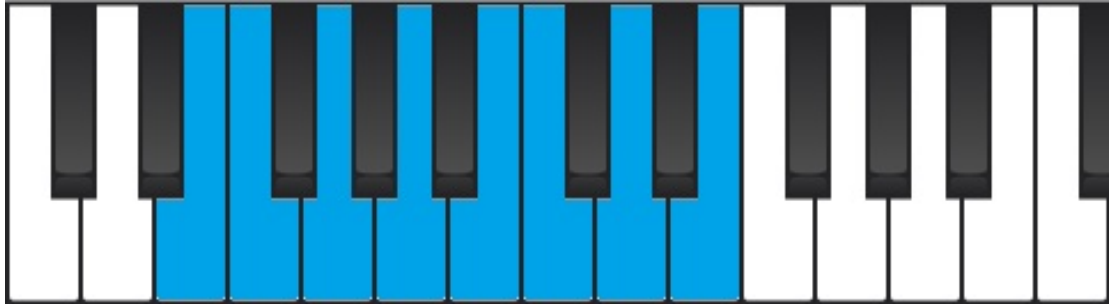


# Modes in C Major Scale

## Phrygian Mode

The Phrygian scale is a minor scale with a lowered 2nd.

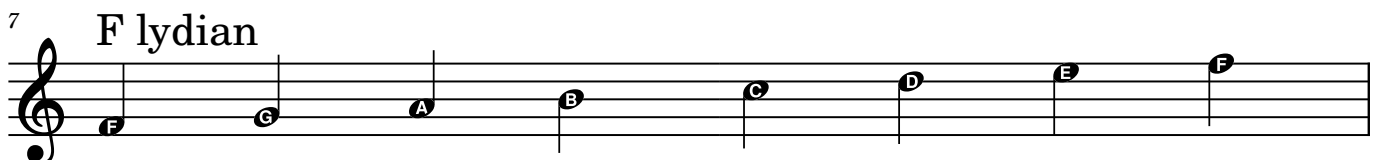
Songs using the Phrygian Scale:  
Hava Nagila (Traditional Jewish Song)



## Lydian Mode

The Lydian scale is a major scale with a raised 4th.

Songs using the Lydian Scale:  
The Simpsons Theme (Danny Elfman)



# Modes in C Major Scale

## Mixolydian Mode

The Mixolydian scale is a minor scale with a lowered 7th.

Songs using Mixolydian Scale:

'When Johnny Comes Marching Home' ~ Patrick Sarsfield Gilmore



### 9 G mixolydian



## Aeolian Mode

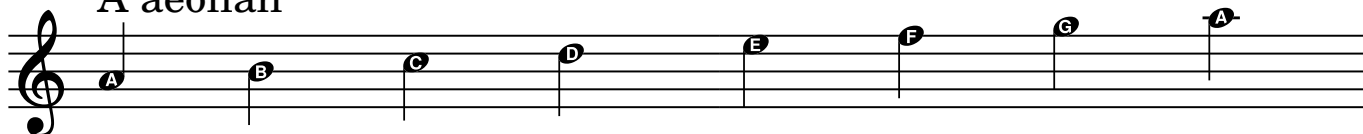
The Aeolian scale is the natural minor scale

Songs using Aeolian Scale:

Nothing else matters (Metallica)



### 11 A aeolian



# Modes in C Major Scale

## Locrian Mode

The locrian scale is the minor scale with a lowered 2th and lowered 5th

Songs using the Locrian Scale:  
Army of Me ~ Björk

